

# Community Hospital

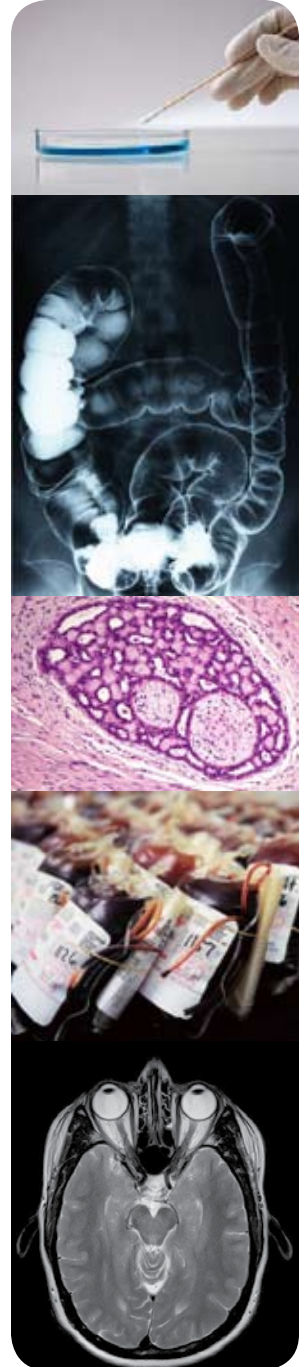
Continuing Medical Education Presentation

## Glucose Monitoring

Presented by:  
Carol Greenlee, MD  
Endocrinology

### Participants will be able to:

1. Identify reasons that blood glucose excursions are damaging to the overall health of the diabetic patient.
2. State the reasons that A1c results can be high or low other than blood glucose levels.
3. Interpret BGM results and provide appropriate intervention to improve the overall blood glucose levels.



This program has been approved for MCPIPA members to receive reward for participation points.

Physicians, pharmacists, nurses, respiratory therapists and other health professionals will benefit from this informative class.

**March 26, 2010 • 7:00 a.m.**  
**Lower Level Conference Room**

CREDIT: This Continuing Medical Education activity is sponsored by Community Hospital which is an Accredited Category 1 CME Sponsor by the American Osteopathic Association and anticipates being approved for one (1) hour of Category 1-A CME credit hours pending approval by the AOA CCME.

Community Hospital is accredited by the Colorado Medical Society to provide continuing medical education to physicians. Community Hospital designates this educational activity for a maximum of (1) AMA PRA Category 1 Credits™. Physicians should only claim credit commensurate with the extent of their participation in the activity.